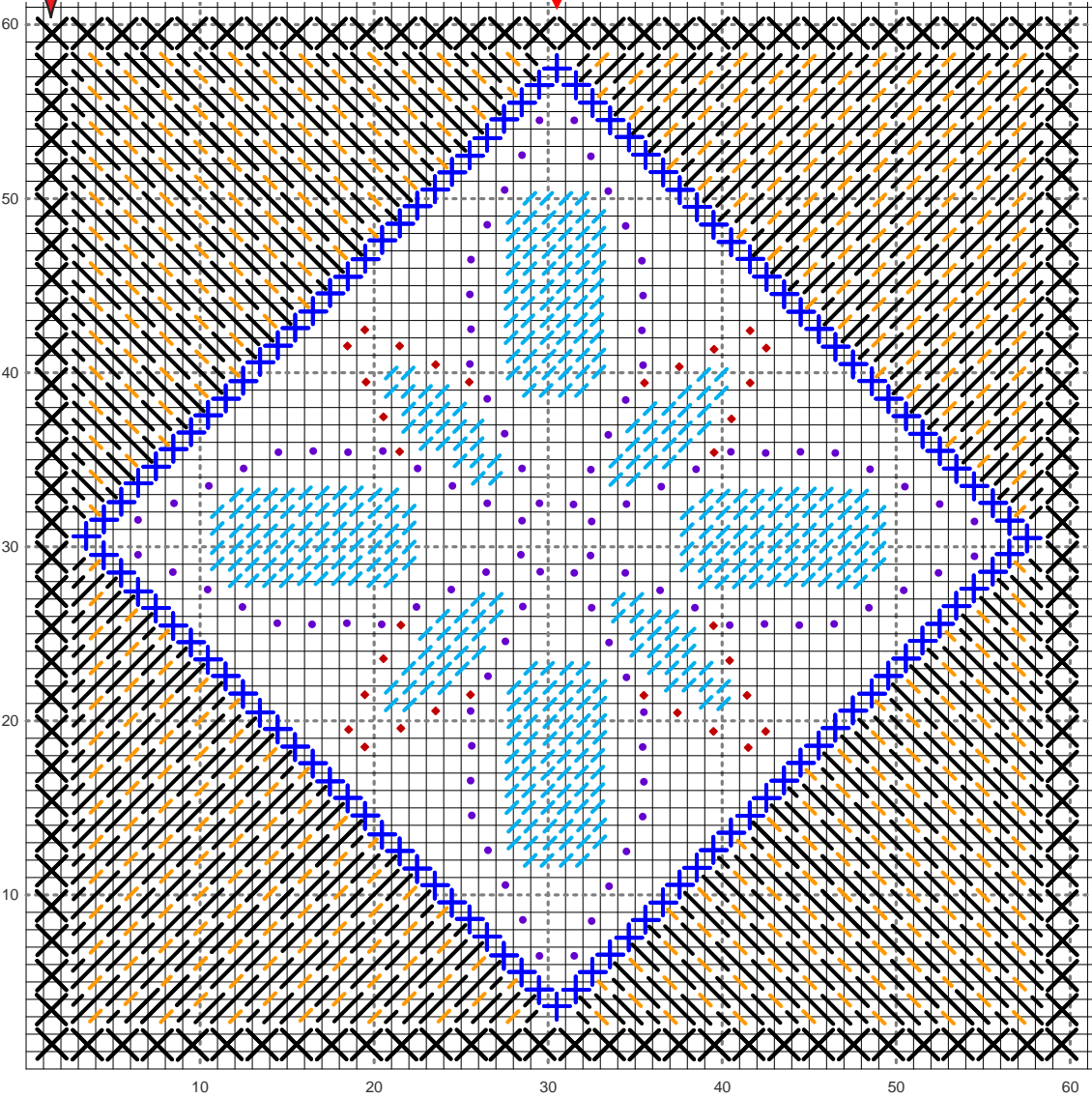


Star of Wonder

Dragon Lady Designs



- Metallic
- Floss
- #5 Perle
- #8 Perle



27/14

29/16

25/12

31/18

23/10

33/20

21/8

35/22

19/6

37/24

17/4

39/26

15/2

41/28

13/52

43/30

11/50

45/32

9/48

47/34

7/46

49/36

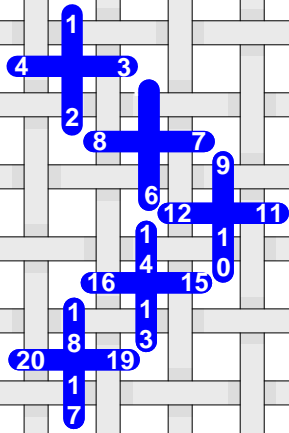
5/44

51/38

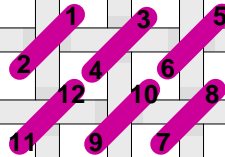
3/42

1/40

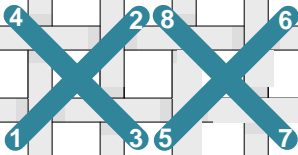
Large
Jessica



Upright
Cross



Tent
Stitch



Cross
Stitch

19/12

21/14

23/16

17/10

25/18

15/8

27/20

29/22

Small
Jessica

13/6

31/24

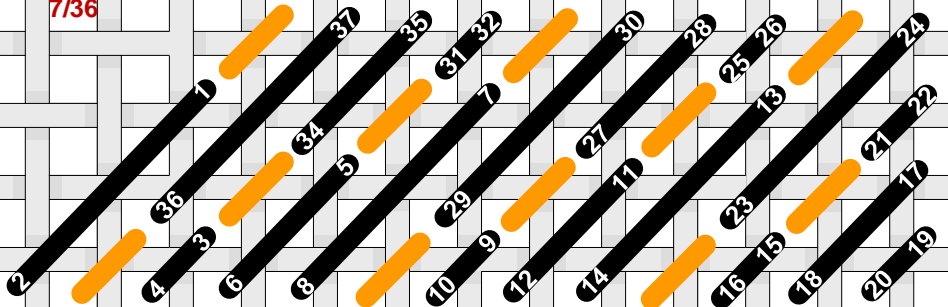
11/4

Nobuku
Filling Stitch

33/26

9/2

7/36



35/28

5/34

3/32

1/30